

DIVERTER BY PASS

Reference **BP 47**

Serie: 10113 (K.L.M.N.O.)

APPLICATION DIFERENCIAL LEVEL METER
 MANUFACTURING MIXERS

Phase Liquid and Gas

Working Temperature Maximum 73° C Minimum -196° C

Working Pressure 50 Bar **Hydrostatic Test** 75 Bar



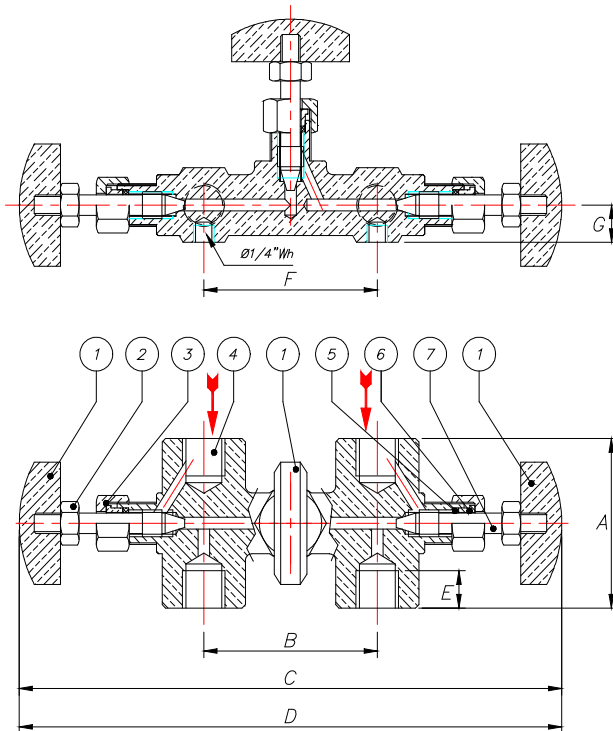
Standards Applied Brass UNS 36000, valves and components
 provided cleaned for use in oxygen according to ASTM CGA G4.1

DIMENSIONAL TABLE (K. M.)		
DN	mm	6
	Pol.	1/4"
Code		01
A		50
B		53,5
C - Open		170
D - Closed		165
E		12
F		53
G		11
Peso (kg)		0,60

SEAL TABLE (O.)		
Description	Code	Standard
PTFE + 25% Fiber Glass	04	ASTM D2000

CONNECTION TABLE (L. N.)		
Description	Code	Standard
NPT Threaded Connection	01	AISI B1.20

OPCIONAL TABLE		
Description	Code	Standard
Nickel Application	004	N/A



POS.	DENOMINAÇÃO	MATERIAL
1	HANDWHEEL	BRONZE UNS C93700
2	NUT	BRASS UNS C36000
3	PREMI NUT	BRASS UNS C36000
4	BODY	FORGED BRASS
5	GASKET	PTFE ASTM D4894
6	PREMI GASKET	BRASS UNS C36000
7	STEM	STAINLESS AISI 304

Standard products table. For more information or customized specs, please contact us